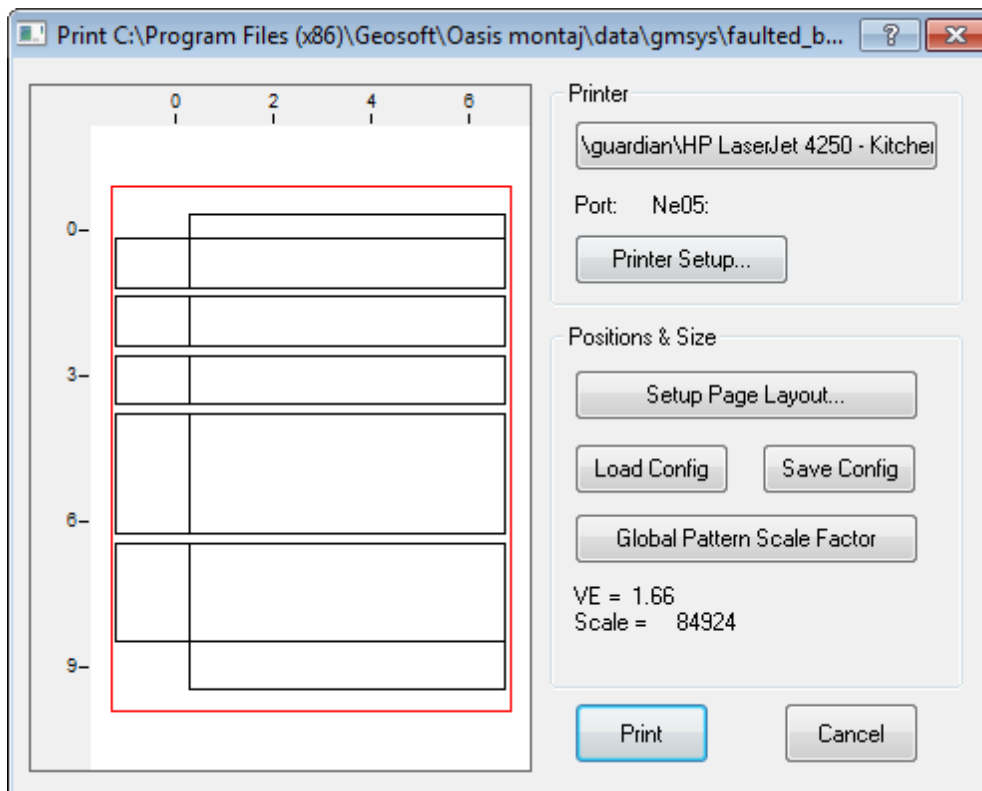


## Print Models in GM-SYS Profile Modelling

GM-SYS Profile provides five internal drivers that produce precisely scaled, high-quality graphics files from your models, for printing or importing into other graphics and image-processing applications. GM-SYS Profile will also print to all of the installed print drivers on the system.

### The Print Dialog

The *Print* dialog displays the current configuration of the model as it will appear on paper. The dialog is partitioned into three sections.



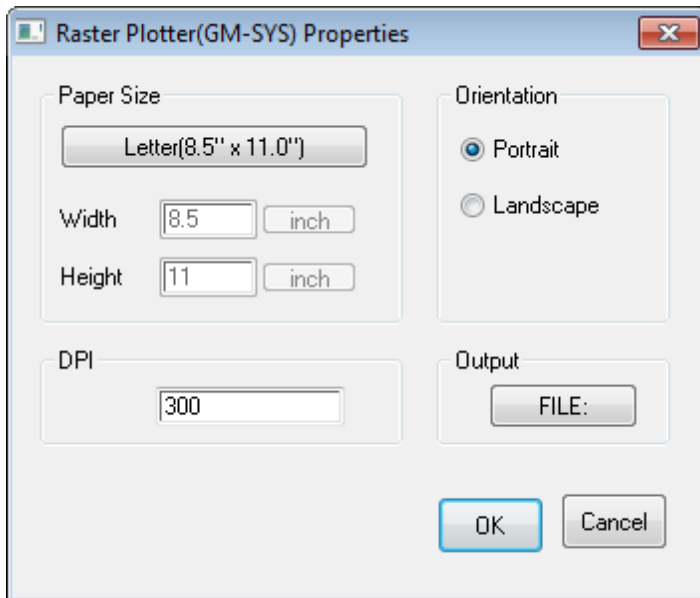
1. The left half of the dialog displays a preview of the model layout, showing the positions and sizes of the model panes, titles, and axis labels on the printed page.
2. The upper-right section of the dialog shows the currently active printer driver and allows you to select a different driver from a pull-down menu. The active driver may be configured (page size, orientation, and some driver-specific parameters) by clicking **Printer Setup**.
3. The lower-right section of the dialog displays the current scale and vertical exaggeration of the plot and contains three buttons that allow you to edit, save, and recall the specifics of the page layout (fonts, scale, units, extents).

## Setting-Up the Printer

The **Printer Setup...** button allows you to change any default settings for the selected printer. For Windows printer drivers, you may also enter the number of copies you wish to print.

### To Set Up the Selected Printer

1. On the *File* menu, select **Print**.
2. Verify the correct *Printer* is selected.
3. Click **Printer Setup...**. The *Properties* dialog appears. This dialog is different for each GM-SYS Profile print driver and installed Windows printer.



4. Make the desired changes.
5. Click **OK** to apply the changes and return to the *Print* dialog.

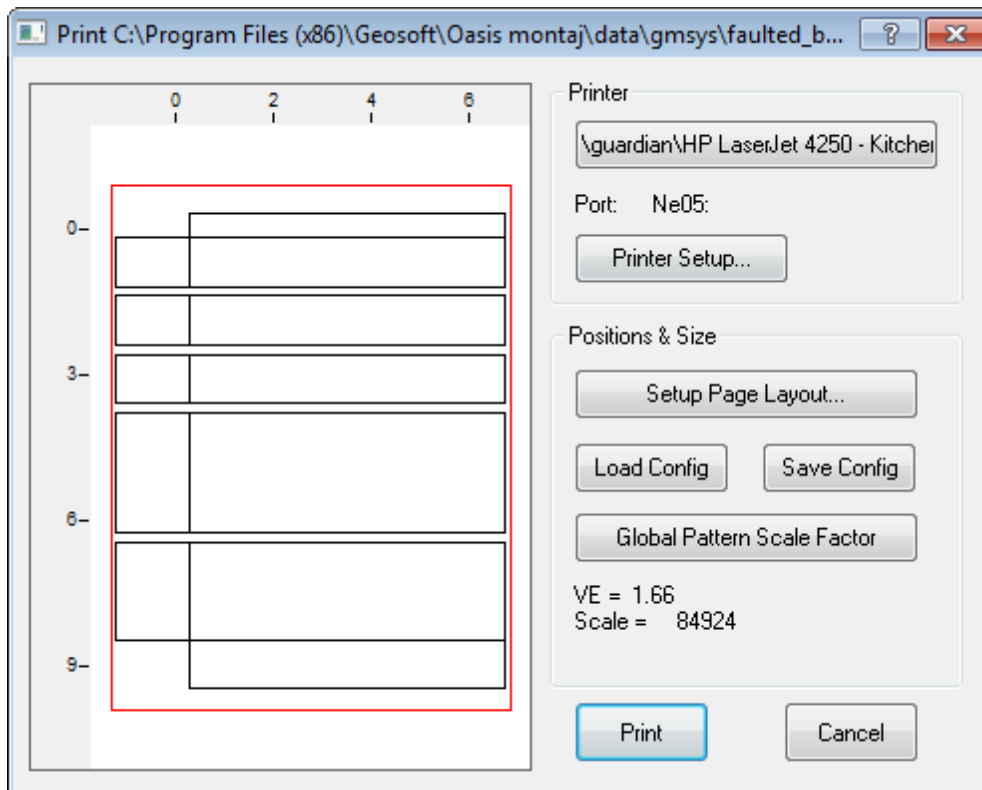
## Set up a Page Layout

Clicking the **Setup Page Layout** button activates the *Plot Settings* dialog, which is comprised of seven tabs for configuring various aspects of your plot. Each tab allows you to specify how the titles and axes in each model pane will be plotted. Fonts, scale, tick-spacing, and units may be individually set for each pane.

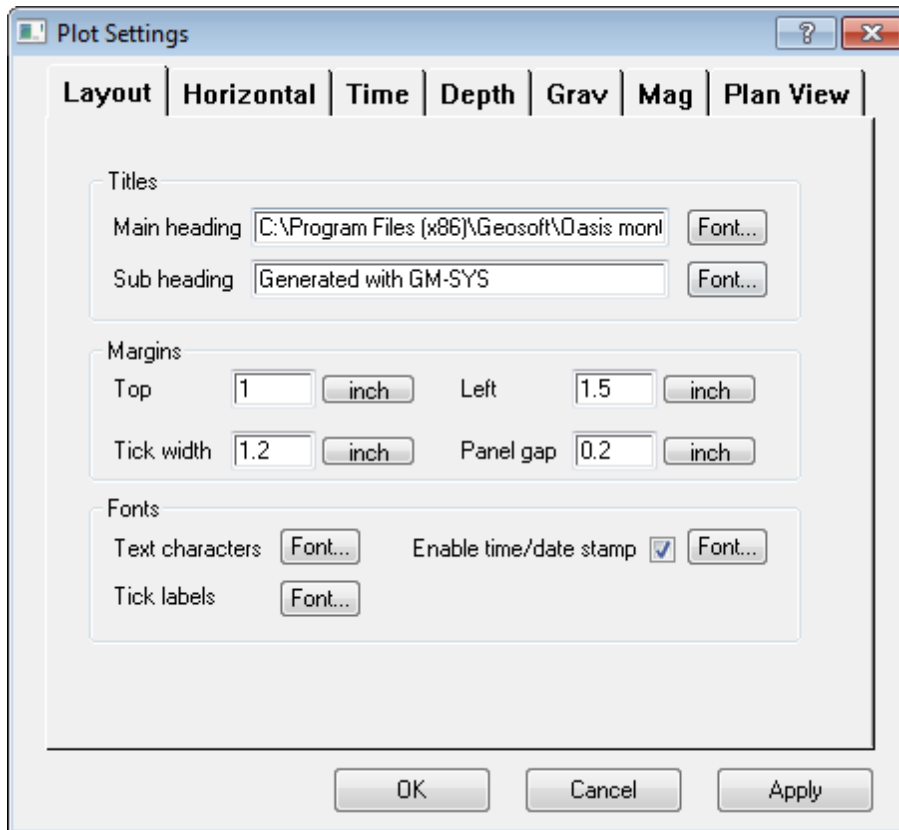
Please refer to the Application Help for specifics on each Plot Settings option.

## To Set Up the Page Layout

1. From the *File* menu, select **Print**. The *Print* dialog appears.



2. Click **Setup Page Layout**. The *Plot Settings* dialog appears.



3. Make the desired changes to the Page Layout.
4. Click **Apply** to apply the changes to your plot. The changes appear in the plot preview.
5. When finished adjusting the layout, Click **OK**. You are returned to the *Print* dialog.
6. Click **Print**. Depending on the printer driver selected, you may be prompted to provide the name and location for an output plot file.

*How-To Guide Publication Date: 07/08/2013*

*Copyright 2013 Geosoft Inc. All rights reserved.*