

Work with Views in GM-SYS Profile Modelling

To GM-SYS Profile, a "View" is a stored set of coordinates specifying the boundaries of the Depth and Time section, Anomaly, and Plan View panes and the depth of the Plan View "slice". Views are useful when you wish to repeatedly edit or plot the same portion of the model. Views may also be used as a mask to limit the extents of imported or exported data. Using the functions built into the View menu you may save, edit, replace, and delete views, change to a previously saved view, and change the order of saved views.



When you open a model in GM-SYS Profile, the first Named View in the View list is used to display the model.

Using Views to Limit Exported Data

Views can be used to limit exported data to a specific area. For example:

- ▶ When you export all horizons, they are clipped to the X-limits of a selected view or the limits of the "current" view.
- ▶ When exporting a plan view polygon, the View in model coordinates defines the polygon corners in external coordinates.
- ▶ When you plot a component of a GM-SYS Profile model on an Oasis montaj map, a view must be selected to define the extents to be plotted.

Previous View

The Previous View function allows you step back through a temporary stack of previous unsaved views generated by utilizing the zoom functions or changing the range of any pane in the Model Window during an editing session.

The number of views remaining in the stack is displayed as part of the Previous View option. By default GM-SYS Profile will maintain up to 20 views in the stack during a modeling session. This number is configurable in the *Preferences*.

Marking the Current View

When the range of the display is changed by utilizing a scroll bar, GM-SYS Profile does not automatically save the view on the Previous View list. Selecting Mark Current View will explicitly place the current view on the temporary stack.

To Mark the Current View

1. Prepare the desired view in the Model Window.
2. On the *View* menu, select **Mark Current View**. The Current View is placed on the Previous View list.

Saved Views

GM-SYS Profile maintains a list of named views that have been saved with the model at the bottom of the View Menu. The first view in the list will be used as the initial view when GM-SYS Profile first opens the model.

Adding the Current View

Add Current View enables you to quickly add a view to the bottom of the View List without accessing the *Manage Views* dialog. You may change the name or any other parameters later using the Edit Views option.

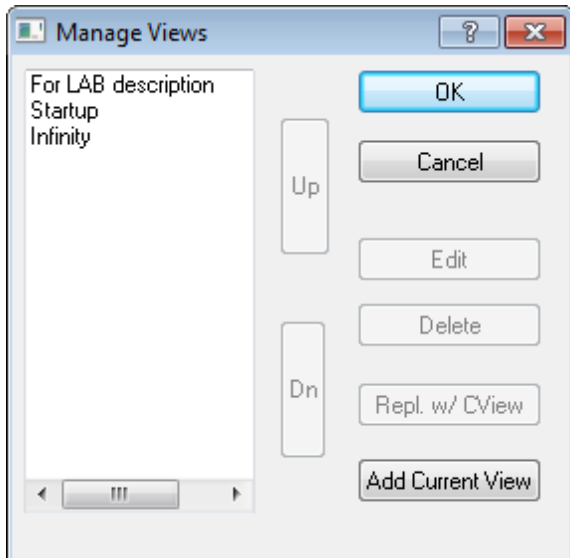
 *In order for an added view to persist, you must save the model!*

To Add the Current View to the Saved View List

1. On the *View* menu, select **Add Current View**. The view name will default to "New View #?" where "?" is the position of the view in the list.

Manage Views

Use the *Manage Views* dialog to create, rename, change or delete a view.



To Manage Views

1. On the *View* menu, select **Manage Views**.
2. Select a view to manage and click **Edit**. The *View* dialog appears. From this dialog you can edit a view.

Deleting a View

To Delete a View

1. Clicking **Delete** will delete the selected view.

Replacing a View

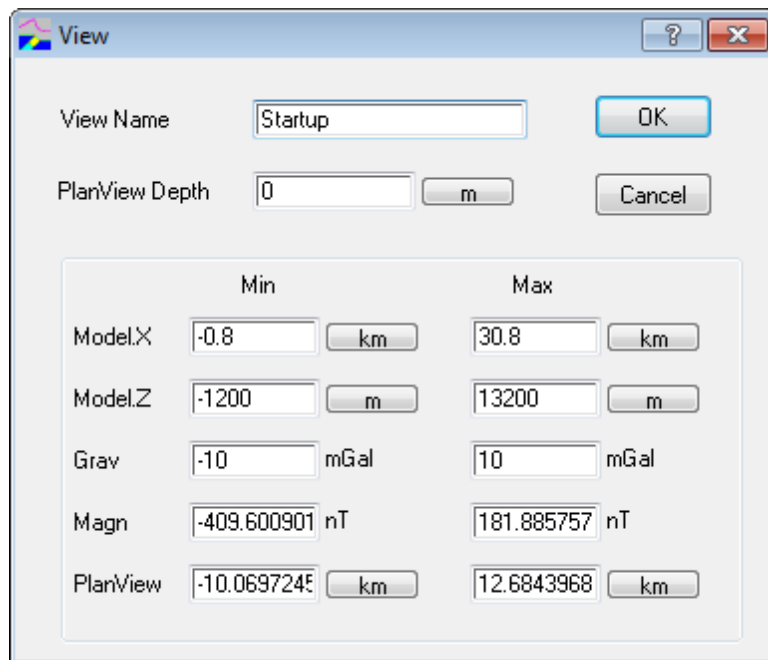
To Replace Selected View with the Current View

1. Select the view to replace and click **Repl. w/ CView**. The pane limits currently used replace the selected view.

Editing Views

Use the *View* dialog to rename, or change a view.

 *In order for changes to the view to persist, you must save the model!*



	Min	Max
Model.X	-0.8 km	30.8 km
Model.Z	-1200 m	13200 m
Grav	-10 mGal	10 mGal
Magn	-409.600901 nT	181.885757 nT
PlanView	-10.0697245 km	12.6843968 km

To Edit a View

1. On the *View* menu, select **Manage Views**. The *Manage Views* dialog appears.
2. Select the view to edit and click **Edit**. The *View* dialog appears. From here you can rename and edit the view.
3. Make the desired changes to the view and click **OK**. You are returned to the *Manage Views* dialog.
4. Click **OK**. You are returned to the model window. The changes will not appear until you select the View again.

How-To Guide Publication Date: 07/08/2013

Copyright 2013 Geosoft Inc. All rights reserved.