

Getting Started with Geochemistry

Welcome to the *Geochemistry™* extension for the Oasis montaj system. This extension is designed for the exploration geologist and enables geoscientists to effectively import, validate and analyze their surface geochemical data. Designed to provide interactive, visual software tools for field and project geologists, the geochemistry import, edit, review and analysis system provides a versatile environment in which to apply your experience and knowledge while staying in touch with original data and multi-disciplinary information.

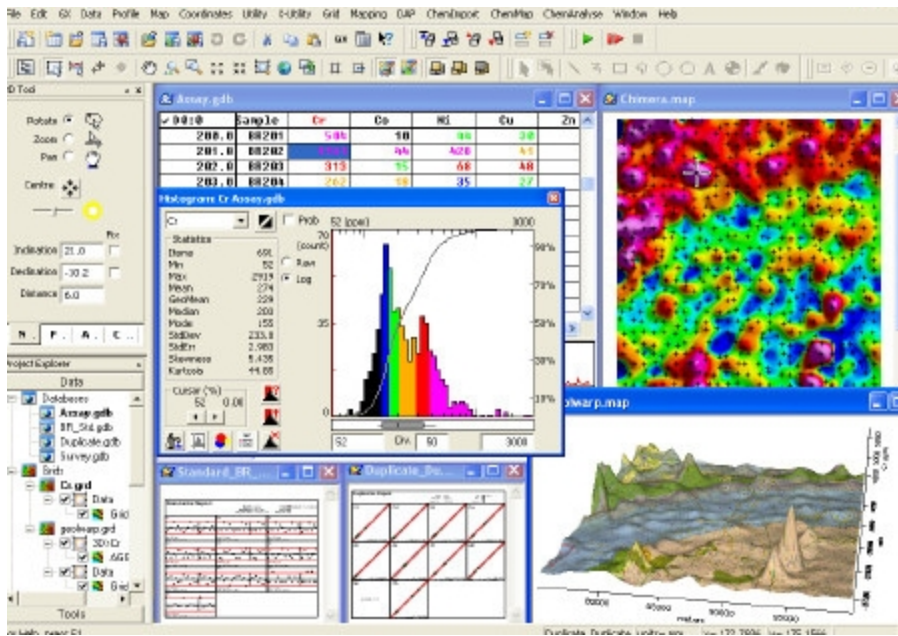
Geosoft provides sample data for you to use when working through these How-To Guides. These data files can be found in your "...\Geosoft\Oasis montaj\resourcefiles\data\geochemistry" folder.

The Geochemistry How-To Guides walk you through tasks you perform in the Geochemistry system. The procedures are divided into common procedures that you use every time you work with the program. The How-To Guide topics include:

- > Getting Started with Geochemistry
- > Importing Geochemistry Data
- > Quality Control with Geochemistry Data
- > Symbol Plotting with Geochemistry Data
- > Analysing Geochemistry Data
- > Classifying Geochemistry Data
- > Working with SEMPLOTT for Geochemistry Data

This *Getting Started with Geochemistry* How-To Guide introduces you to the Geochemistry extension, which provide the ability to import, validate and analyze surface geochemical data. This guide explains the Geochemistry system, and how to:

1. [Creating a Project](#)
2. [Loading the Geochemistry Menu](#)
3. [Set Geochemistry Project Information](#)



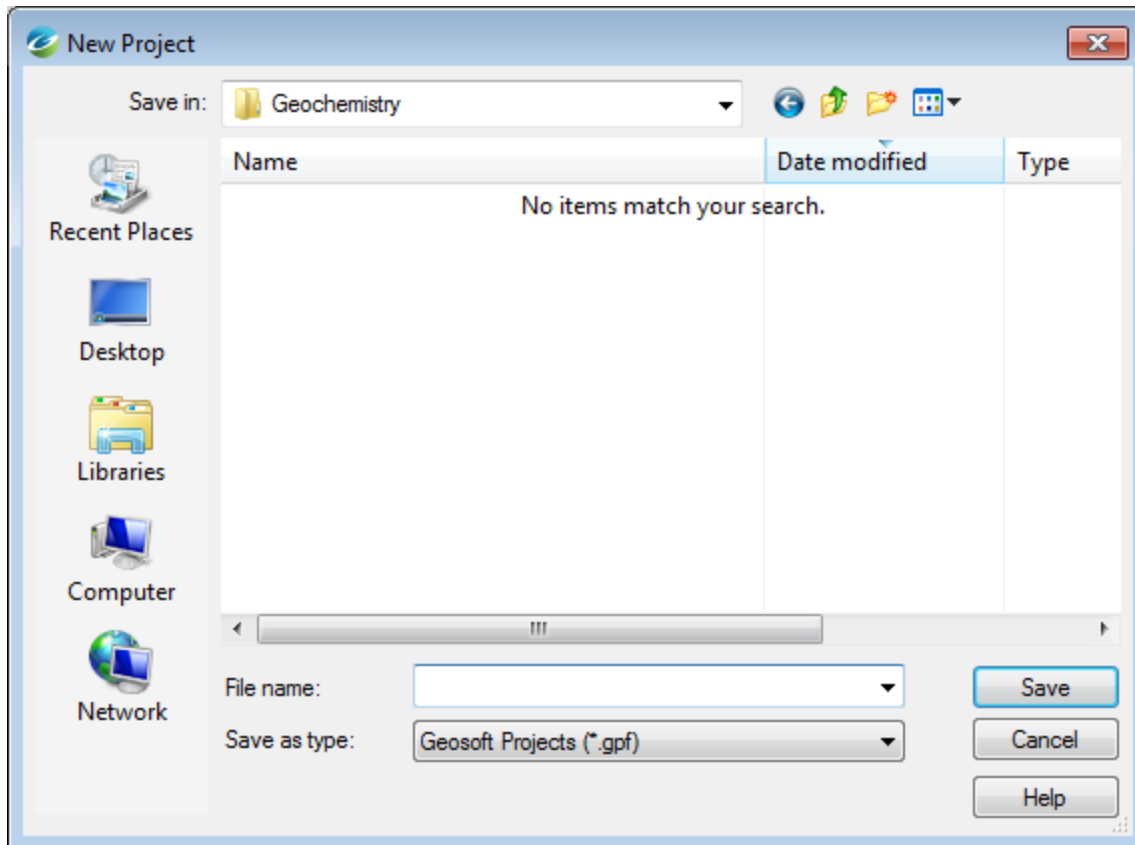
Create a New Project

Working in Geochemistry requires an open project. A project encompasses every item in your working folder, including the data files and tools used and the state in which you left them, as well as the menus loaded.

The system assumes that all your project files are located in the same folder.

To create a Project

1. On the *File* menu, select *Project* and then select **New**.
The *New Project* dialog appears.



Oasis montaj assumes that your project data is in the folder containing this project file.

2. Specify a name and location for the project.
3. Click **Save**.

The system saves the project and indicates that it is open by adding menus to the menu bar, adding buttons to the toolbar, and by displaying the *Project Explorer* pane. These are visual clues indicating that you are ready to start working with the system.

Project Explorer

The Project Explorer tool enables you to browse and open project items. The Project Explorer pane has two tabbed sections. The Data section displays all data files included in the project, and the Tools section organizes and maintains the project tools. To access the Tools section, you click the Tools bar at the bottom of the Project Explorer pane. To return to the Data section, you click the Data bar at the top of the Project Explorer pane.

Project Data

The Project Data section includes databases, grids, maps, and voxels opened or created in the current project. Project Explorer includes the Data tools that enable you to keep track of project information, including the new data description tool

that enables you to add descriptive text to project items, which is then displayed with the item properties. Enhanced metadata capabilities provide access to the properties of all data items displayed in the Project Explorer pane using Metadata Browser.



*For more information on the data tools, see the **Online Help** .*

Project Tools

The Project Tools section provides access to all the tools available for working with your data. There are three types of tools:

- > Tools – Project Explorer, Undo/Redo Tool, and View/Group Manager Tool
- > Toolbars – Standard Bar, Database Tools Bar, Map Group Editing Bar, Map Layout Bar, Map Template Tools Bar, Map Tools Bar, Polygon Edit Bar and Script Bar
- > Auxiliary Tools – Histogram, Scatter plot, Probability plot, and Triplot

The Project Explorer enables you to show/hide the above tools as required, which enables you to keep your project as streamlined as possible.



*For more information on the Project Explorer tools, see the **Online Help**.*

Load the Geochemistry Menus

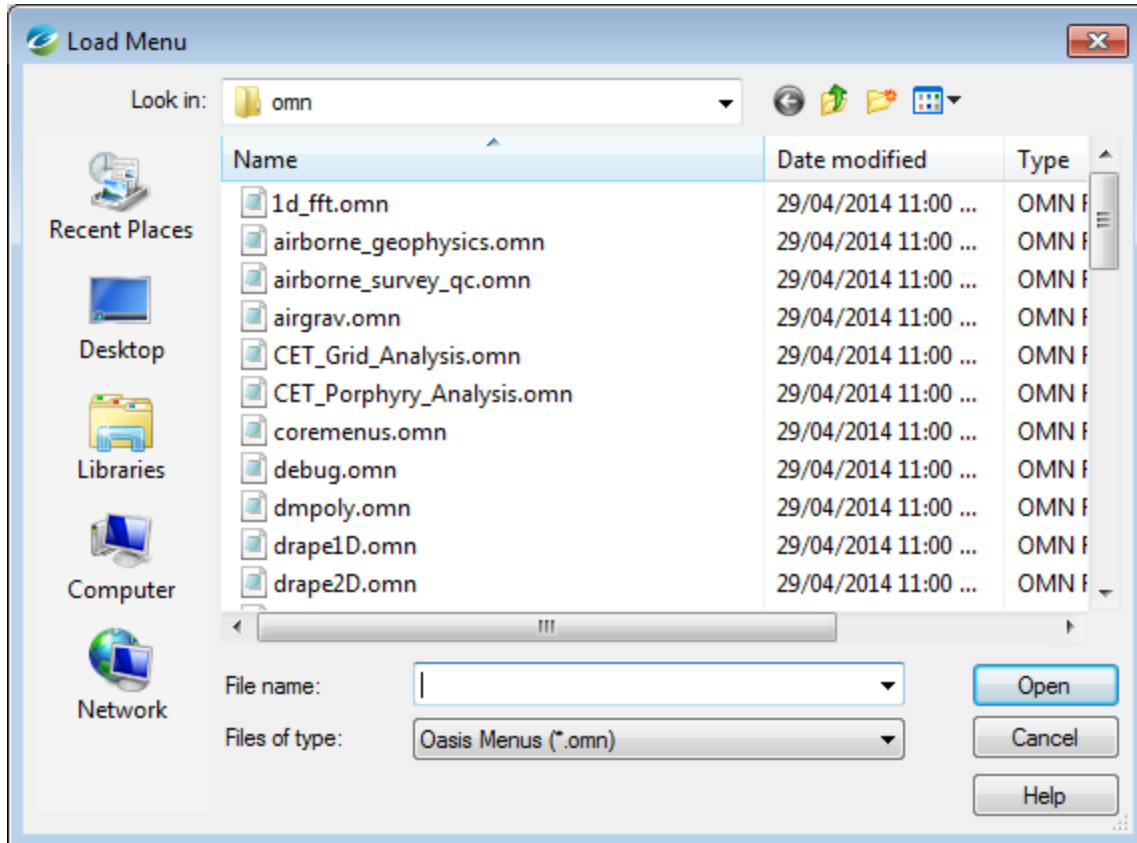
Before you can start working with the Geochemistry system, you must load the *Geochemistry* menus.



You can add Geochemistry as a default menu by adding it to the Default menus parameter on the Edit | Settings | General dialog.


To Load the Geochemistry Menus

1. Once you have opened your Geochemistry project.
2. On the GX menu, select **Load Menu**.
The *Load menu* dialog appears.



- From the list of files, select *geochemistry.omn* and then click the **Open** button.

The system displays three new Geochemistry menus (*GeochemImport*, *GeochemMap* and *GeochemAnalysis*) on your menu bar.

 You can add both the Geochemistry and the SEMplot menus at the same time by holding down the <Ctrl> when you select both the *geochemistry.omn* and the *semplot.omn* files, and then click the **Open** button. The system displays all of the new menus, including the three Geochemistry menus (*GeochemImport*, *GeochemMap* and *GeochemAnalysis*) and two SEMplot menus (*Semplot Data* and *Semplot Plot*) on your menu bar.

Setting Geochemistry Project Information

Geochemistry project information (company name, project name, a project description, scientist name, project date, and any additional comments) can be stored within your project.

- On the *GeochemImport* menu, select **Project Information**.
The *Project information* dialog is displayed.

The screenshot shows a 'Project information' dialog box with the following fields and values:

- Company/Organization: Geosoft, Inc.
- Project Name: Geochemistry Tutorial
- Project Description: Geochemistry
- Project Scientist: John Doe
- Project Date (yyyy/mm/dd): 2012/04/11

Buttons at the bottom: OK, Comments, Cancel.

2. Specify the project information in the text boxes provided.



*You can add additional comments to your project by clicking the **Comments** button.*

3. Click **OK** when you are finished.

Publication Date: December-16-152015

Copyright 2015 Geosoft Inc. All rights reserved.