

Exporting and Printing Maps in Oasis montaj

Oasis montaj provides the ability to export interim processed data to another system for additional manipulation or to a GIS system for creating final map products and integrating with other sources of data. Required tools for exporting data to Geosoft XYZ and other formats are also provided.

Oasis montaj uses your installed Windows system drivers to create printer or plotter output. Depending on your installed driver, you may find it does not produce the highest quality output or that it takes a long time to produce a plot.

Geosoft provides a special printer configuration capability that enables you to initialize an internal raster engine that performs most of the print/plot processing and passes it to the driver for final output.

If you are not satisfied with your driver's performance, you can try selecting this option. Normally, with high-quality drivers, you should not have to use this option but it can help with problem drivers or PostScript printing.

Exporting Maps

Geosoft recognizes the need for the ability to move data, grids and images easily to other software systems. Supported export formats for maps include:

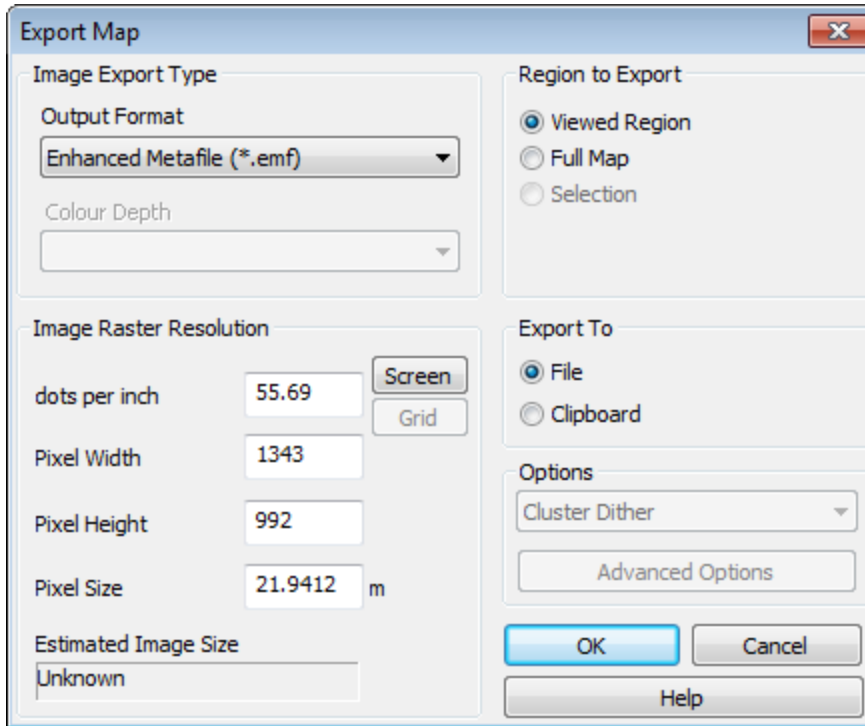
Enhanced Metafile	MapInfo TAB
ArcView Shapefile	Geosoft Plot file
CGM Plot	DXF AutoCAD
Bitmap	DXF AutoCAD v12
PCX	JPEG
PNG	JPEG High Quality
Encapsulated Post Script	TIFF
TIFF Compressed	GeoTIFF
Geosoft COLOUR Grid	MapInfo TIFF
ER Mapper RGB	ArcView TIFF
ER Mapper ECW Compressor	

Exporting Maps to a File

The Export Map option enables you to export your maps to a file or the clipboard. For more information on exporting data, refer to the *How-To Guide: Importing and Exporting Databases*.

To Export Maps to a File

1. Select an open map in your project.
2. On the *Map* menu, select **Export**.
The *Export Map* dialog appears.



3. Select the *Output Format*, such as *.EMF, *.TIF, *.PLT or as required.
4. Specify the *Region to Export* as *Viewed Region*, *Full Map* or *Selection*.
5. Set the *Image Raster Resolution*.
6. You can *Export To* to *File* or *Clipboard*.
7. From the *Options* dropdown list, select from *Cluster Dither*, *Error Diffusion* or *No Dither*.



For information on any of these parameters, click the **Help** button on the *Export Map* dialog.

9. Click **OK**. The system exports the map.



If you selected to export to a *File* the system will display the *Exported file name* dialog. Specify a name for the file and click **Save**.

Printing Maps

By default, the system is set up to use your current Windows driver. When you start printing maps for the first time, you will most likely accept the defaults. Depending on your driver's performance however, you may want to add a new configuration that uses a more advanced printing option, such as Geosoft bands, Geosoft bands and dither, or HP-RTL. Refer to the on-line help system for a complete discussion on the pros and cons of the different printing modes.

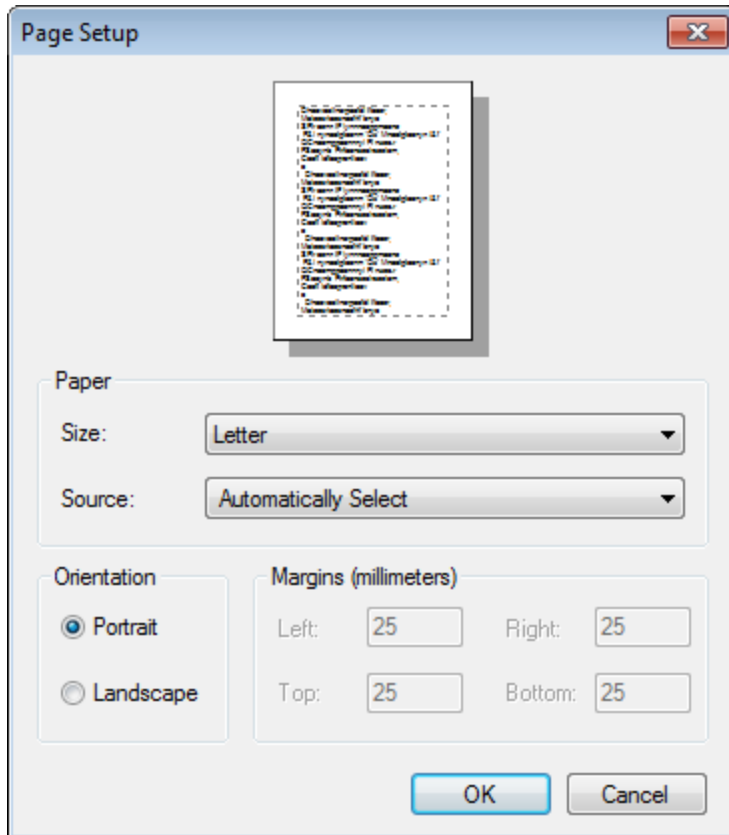
Page and Printer Setup

For optimal printing, you may have to experiment with printer settings and properties. Different drivers allow different selections (paper size, orientation, dithering patterns and colour controls). However, they can be very slow especially for large plots.

To Configure Your Page Setup

Before you begin, verify your project is open.

1. On the *File* menu, select **Page Setup**.
The *Page Setup* dialog will appear.



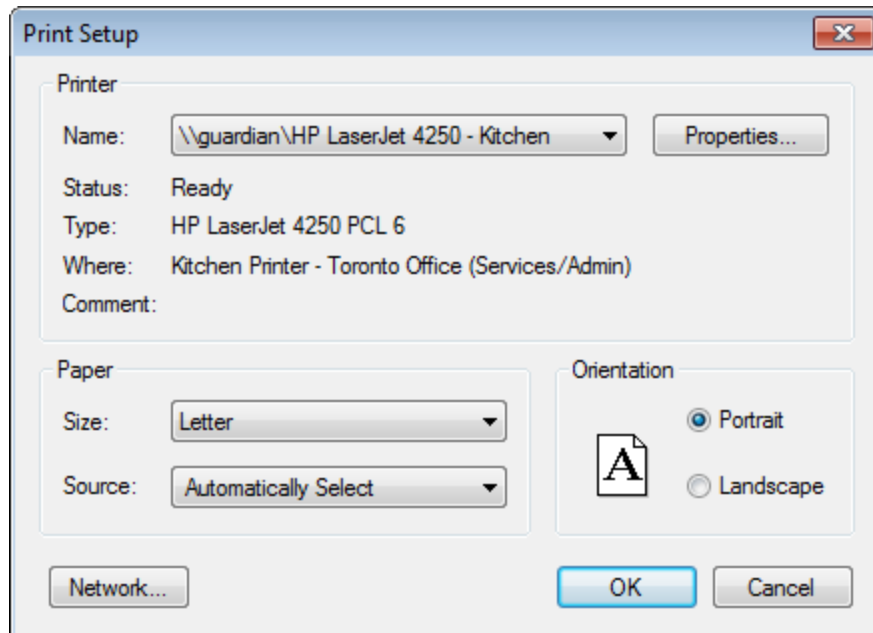
2. From the dropdown lists, select your *Paper Size* and *Paper Source*.
3. Specify the *Orientation: Portrait* or *Landscape*.

4. If required, adjust the *Margins*.
5. Click **OK** to confirm the settings.

To Configure Your Printer Setup

Before you begin, verify your project is open.

1. On the *File* menu, select **Printer Setup**.
The *Print Setup* dialog will appear.



2. From the dropdown list select the printer *Name*.

 You can click *Network* to browse for a different network printer.

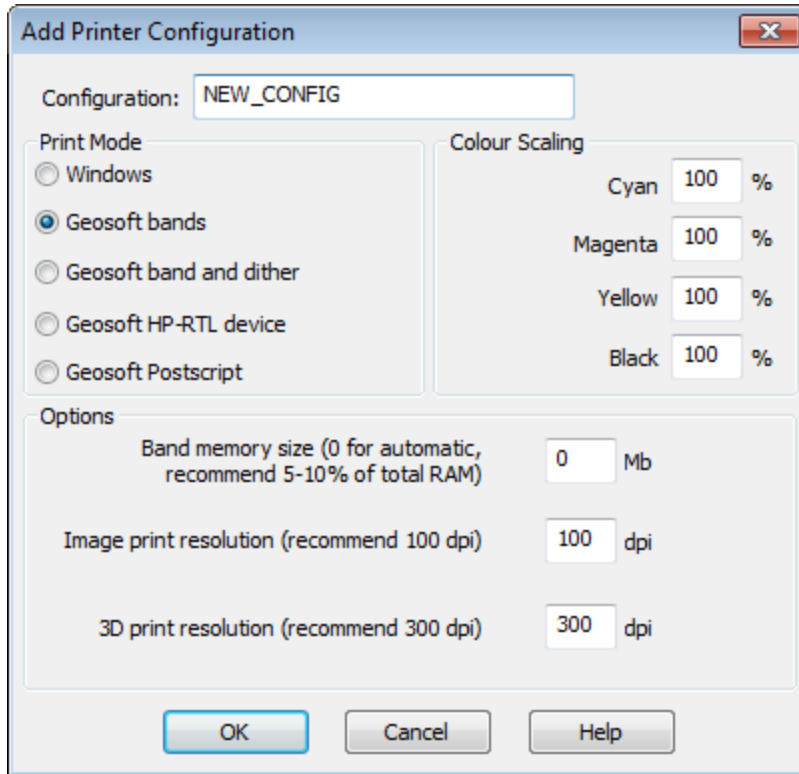
3. Adjust the *Paper* and *Orientation* settings as desired.
4. Click **OK** to confirm the settings.

Change or Add New Printer Configuration

Use the *Change Printer Configuration/Add Printer Configuration* dialog(s) to change the configuration of your printing mode, colour scaling and other print options.

To Add a New Printer Configuration

1. On the *Print* dialog, click the **Add Config** button.
The *Add Printer Configuration* dialog will appear.



2. Select your *Print Mode*.
 - If you want to use Windows drivers for printing, select *Windows*.
 - If you are having problems with your Windows drivers and want to optimize your printing speed, select *Geosoft bands* or *Geosoft bands and dither*
 - Select *Geosoft HP-RTL device* if you have this type of printing device
3. Adjust the *Colour Scaling* to change the CYMK colour values, if required.
4. If you want to adjust the *Image print resolution* change the default dpi value.
5. Click **OK**. The system saves your new configuration and initializes it for use.



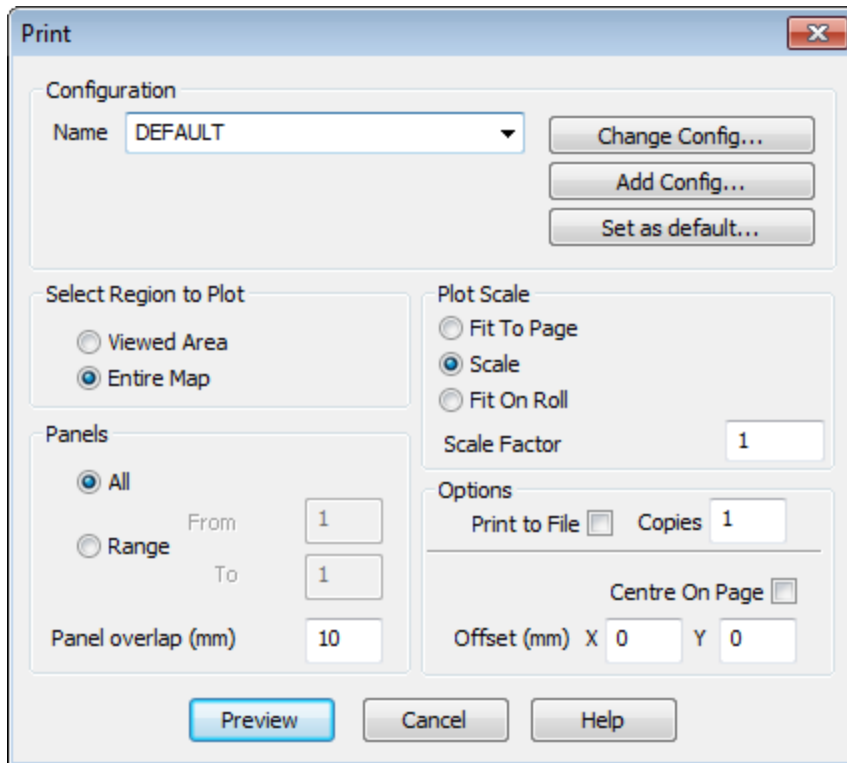
To change your printer configurations click the **Change Config** button from the *Printer Setup* dialog.

Print Preview

Use the Print Preview dialog to display the active map, as it would appear when printed.

To Preview a Map Before Printing

1. On the *File* menu, select **Print**.
The *Print* dialog will appear.



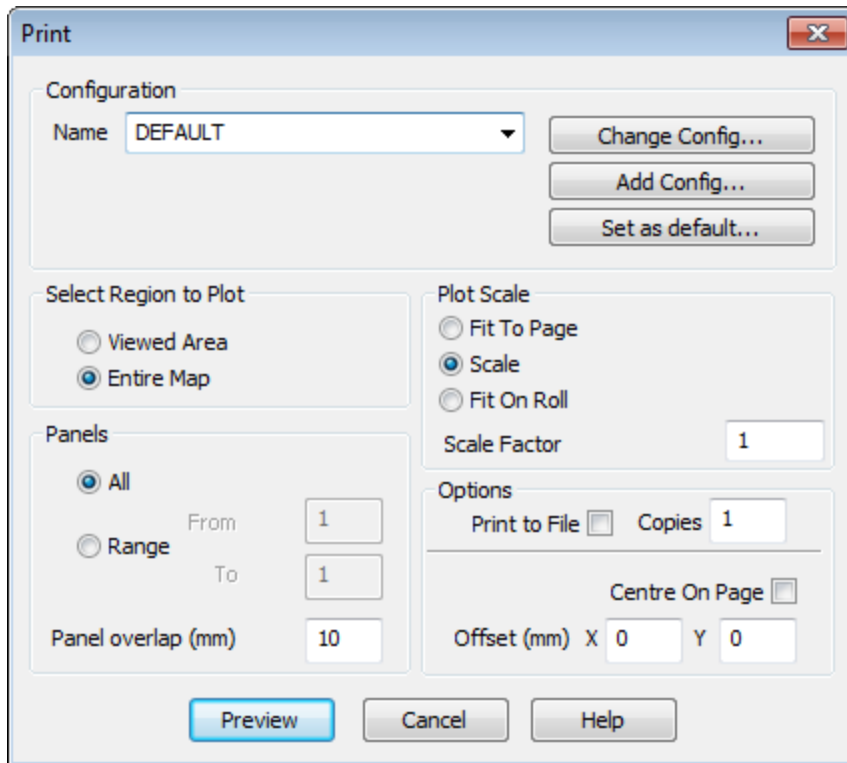
2. Specify the *Select Region to Plot* and the *Plot Scale*.
3. If your map uses *Panels*, specify that option.
4. Click **Preview**. The system displays a preview of how your map will look when printed on paper.
5. Click **Print** if the map is ready for printing or click **Close** to return to the *Print* dialog.

Print a Map

Use the *Print* dialog to specify how you want your print job to appear and to send a job to the printer.

To Print a Map

1. Select (highlight) the map that you would like to print.
2. On the *File* menu, select **Print**.
The *Print* dialog will appear.



3. Specify the *Region* you want to print: *Viewed Area* or the *Entire Map*.
4. Specify the *Plot Scale*.



To maintain the map scale, select the *Scale Factor* option and specify a value, (1 = 100 per cent). If you use this option, the map may require more than one page depending on the media to which you are printing or plotting.

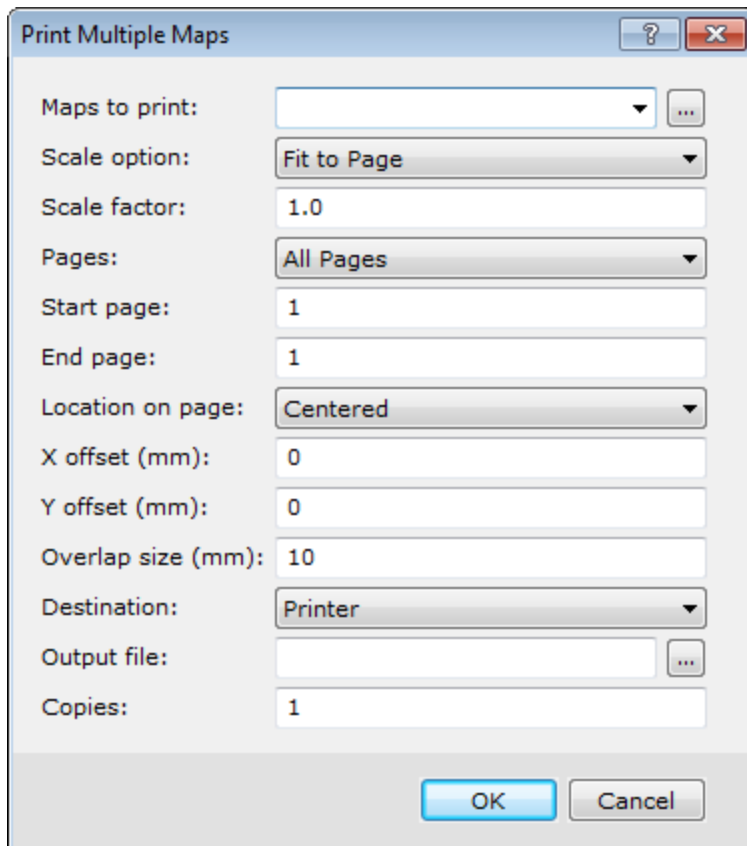
5. If the plot uses *Panels*, specify either *All panels* or a *Range* of panels. If you are printing multiple panels, you can specify an overlap in mm. This helps you to match panels later.
6. Specify the number of *Copies* to be printed.
7. If required, select the *Print to File* option box and specify a filename.
8. If required, select *Centre on Page* to centre the plot on the page. You can also centre the plot on a paper roll by selecting *Fit On Roll*.
9. To move the map from its origin (lower left corner of page or plot), specify an *Offset* distance in mm.
10. Click **Print** to send the map or plot to the currently configured printer or plotter.

Printing in Batch

For high efficiency automated printing and plotting, Geosoft provides a batch printing capability. This capability enables a number of plots to be printed sequentially without any hands-on intervention.

To Print in Batch

1. On the *File* menu, select **Batch printing**.
The *Print Multiple Maps* dialog will appear.



2. On the *Maps to Print* box, specify the maps you want to print. To specify more than one map, map names should be separated by a '|' (vertical bar) character.



*You can also select multiple files by clicking the Browse button. In the Maps to Print dialog press and hold the **Ctrl** key and while clicking the left mouse button to select the maps you wish to print.*

3. Specify the other parameters as required.



*For more information about Batch printing options click the **Help** button.*

4. Click **OK**. The system sends the maps to the installed printer or plotter.

How-To Guide Publication Date: 29/04/2014

Copyright 2014 Geosoft Inc. All rights reserved.