

Target for ArcGIS Strip Log Plot

This *Target for ArcGIS Strip Log Plot* How-To Guide provides a comprehensive set of options creating a Strip Log Plot. The Target for ArcGIS Strip Log option enables you to display up to 16 data/graph type selections in each plot.

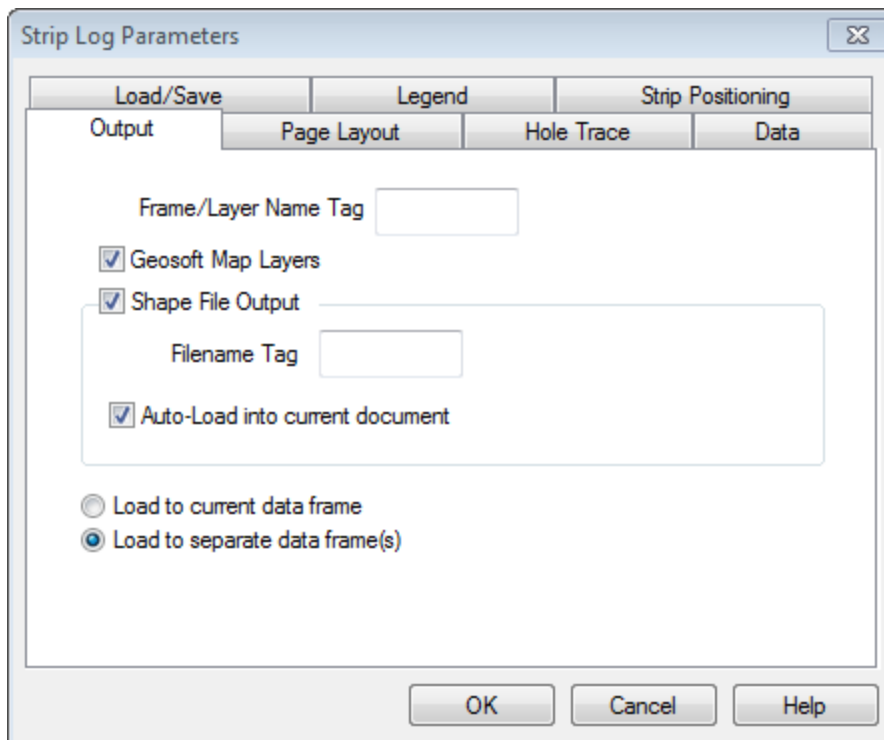
The Target for ArcGIS Strip Log plot options are provided in easy-to-use tab dialogs enabling quick access to all the settings from a single dialog. The dialog includes sensible defaults; enabling easy creation of Strip Log plots.


Creating a Strip Log Plot

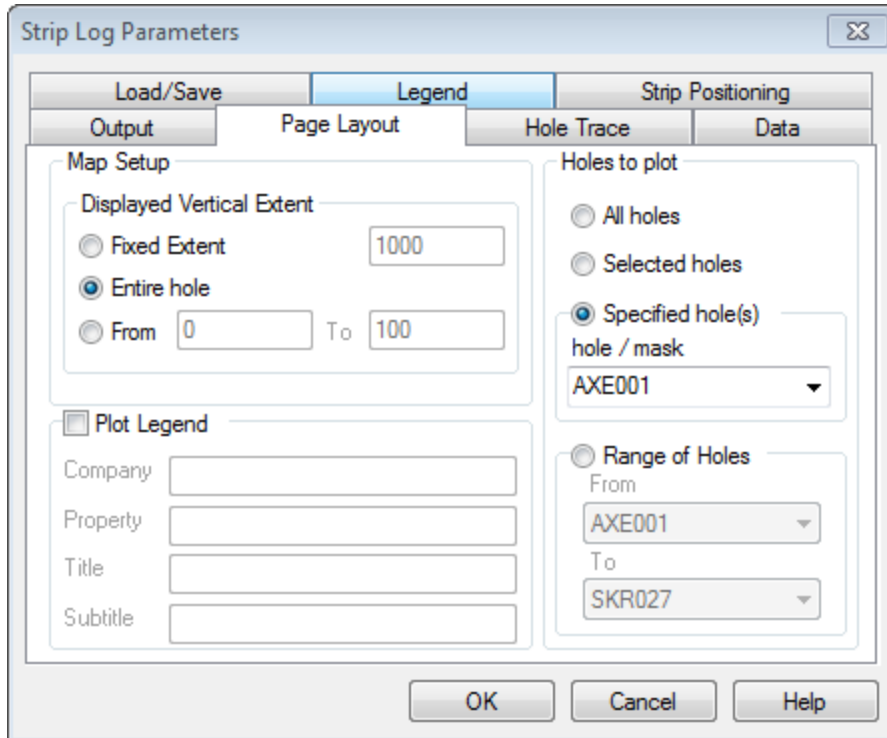
The Target for ArcGIS Strip Log plot options are provided in easy-to-use tab dialogs, enabling quick access to all the settings from a single dialog. The dialog includes sensible defaults; enabling easy creation of Strip Log plots.

To Create a Strip Log

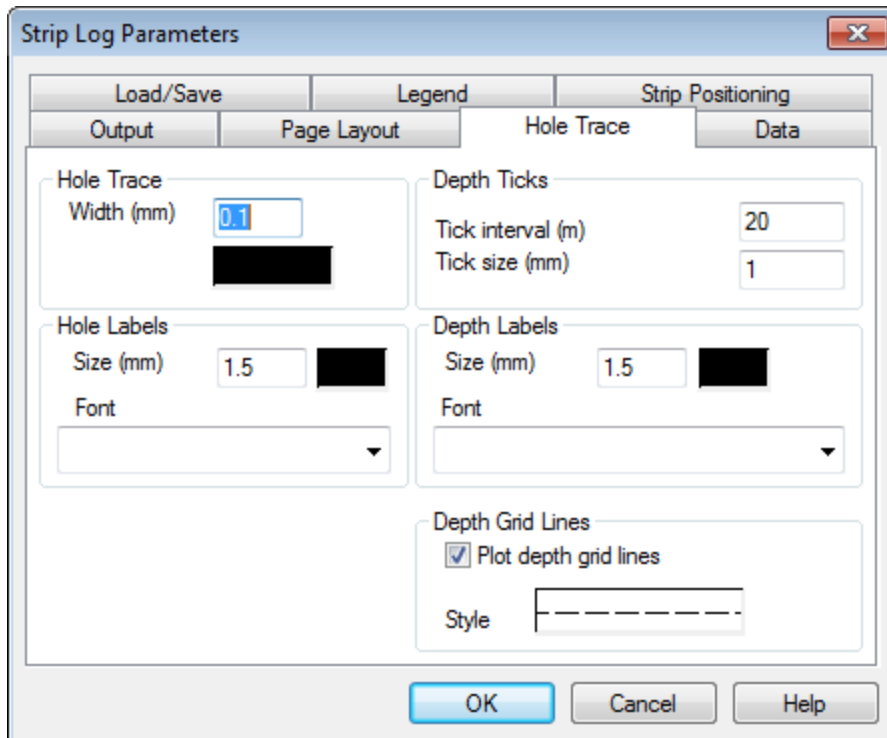
1. On the *Target Drillhole* toolbar, click the **Plot Strip Log** icon (). The *Output* tab of the *Strip Log parameters* dialog appears.



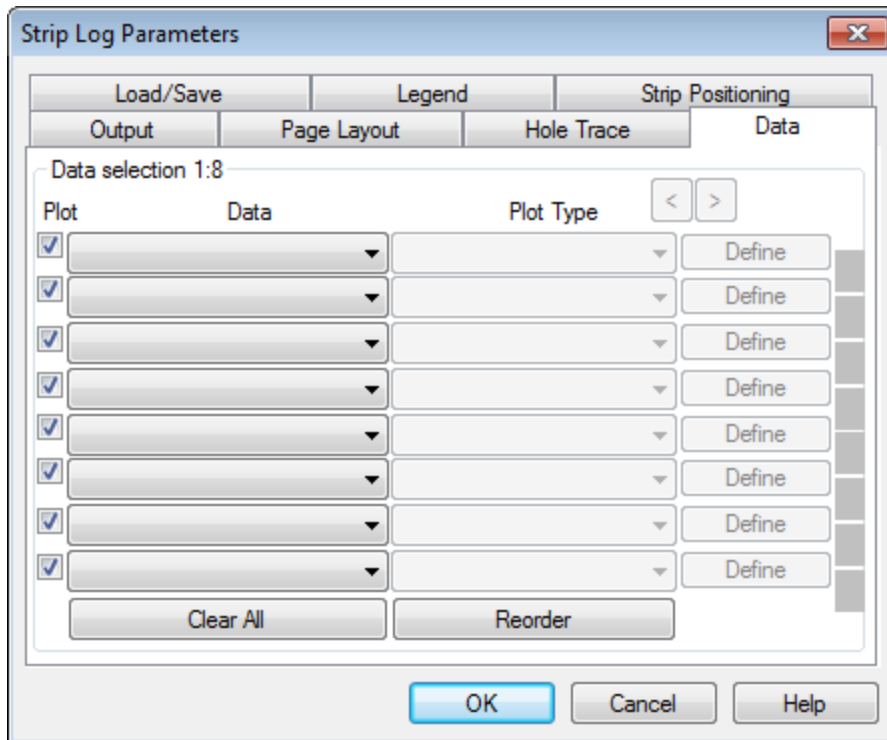
2. Specify the *Output* parameters as required. For detailed information, click the **Help** button.
 -  *Each tab has a separate help file, click the **Help** button on the tab of interest.*
3. To specify the Holes to plot, select one of the three options on the *Page Layout* tab.




4. Select the *Hole Trace* tab to specify hole trace parameters, such as Depth Ticks.




5. To plot data along the hole traces in the strip log, select the *Data* tab.



 *The Plot boxes enable/disable the Data selection dropdown list. This is a convenient way to select or de-select individual data plots, without clearing or re-selecting the data from the Data lists.*

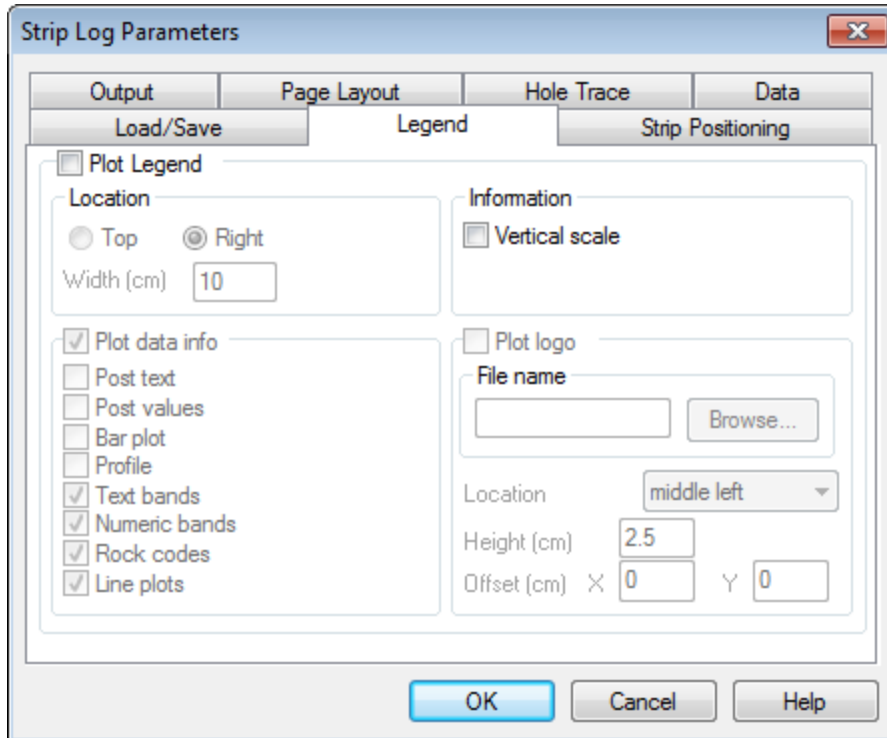
6. Using the *Data* dropdown lists, select the data channels available in the current Target for ArcGIS project you want to plot.

 *The selections combine the name of the channel, along with the identifier for the project database in which the channel is found.*

7. Using the *Plot Type* dropdown lists, select the plotting type for the data.

 *Plot Types displayed are based on the type of selected data.*

8. To specify the legend parameters, select the *Legend* tab.



9. To enable the plotting of a legend, check the *Plot Legend* box.
10. To enable the plotting of data information, check the *Plot data info* box and then select the data information you wish to plot in the legend.
11. Click **OK** on the *Strip Log Parameters* dialog. The strip log map is created and displayed.

How-To Guide Publication Date: 25/02/2013

Copyright 2013 Geosoft Inc. All rights reserved.